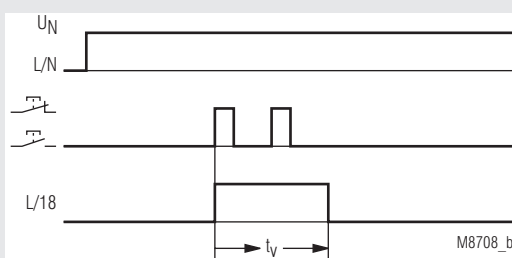


MINITIMER Staircase Lighting Time Switch RK 8810/001



- According to EN 60 669-1, EN 60 669-2-1
- Setting range 0.5 ... 10 min.
- For 3-wire circuit N on push button
- Can not be retriggered
- Switch for continuous light on unit
- Contact: 16 A
- Width 17.5 mm

Function Diagram



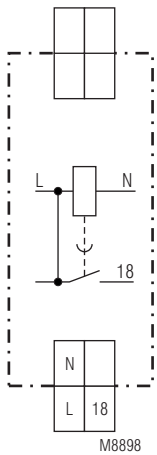
Approvals and Markings



Application

- Staircase lighting time switch
- Timer, release delay

Circuit Diagram



M8898
RK 8810.41/001

Notes

Unit and push button have to be connected to the same phase (see connection diagram) The output contact is not volt free.

Maintenance

Inspection test and maintenance intervals are to be performed annually.

Technical Data

Time Circuit

- Time range:** 0.5 ... 10 min
Repeat accuracy: < 1 % of setting value

Input

- Nominal voltage U_N :** AC 230 V
Voltage range: 0.9 ... 1.1 U_N
Nominal consumption: approx. 5 VA
Nominal frequency: 50 / 60 Hz
Permitted residual current caused by glow lamps in the push buttons: depending on load current
Min. pulse duration: 30 ms

Connection Terminals

Terminal designation	Signal designation
L, N	Auxiliary voltage AC
L, 18	Button
L, 18	Contact output

Technical Data

Output

Contacts: 1 NO contact, delay not floating
Contact opening gap: > 3 mm
Thermal current I_{th} : 16 A
Switching capacity with lamp load

Fluorescent lamp load

Duo switching:

(series compensated) 2 x 20 lamps with 58 W each

Glow lamp load: 2000 W

Short circuit current strength: > 700 A

Short circuit strength

max. fuse rating: 16 AgL IEC/EN 60 947-5-1

Mechanical life: > 1 x 10⁶ switching cycles

General Data

Nominal operating mode: impulse operation / continuous operation

Temperature range

Operation: - 20 ... + 50°C

Storage: - 30 ... + 60°C

Altitude: < 2.000 m

Clearance and creepage distances

rated impulse voltage /

pollution degree: 4 kV / 2 IEC 60 664-1

EMC

Electrostatic discharge (ESD): 8 kV (air) IEC/EN 61 000-4-2

HF irradiation

80 MHz ... 1 GHz: 10 V / m IEC/EN 61 000-4-3

1 GHz ... 2.7 GHz: 10 V / m IEC/EN 61 000-4-3

Fast transients: 2 kV IEC/EN 61 000-4-4

Surge voltages

between

wires for power supply: 1 kV IEC/EN 61 000-4-5

between wire and ground: 2 kV IEC/EN 61 000-4-5

HF wire guided

0.15 ... 80 MHz: 10 V IEC/EN 61 000-4-6

Interference suppression: Limit value class B EN 55 011

Degree of protection:

Housing: IP 40 IEC/EN 60 529

Terminals: IP 20 IEC/EN 60 529

Enclosure:

Thermoplast with V0-behaviour according to UL subj. 94

Vibration resistance

Amplitude 0,35 mm

frequenzy 10 ... 55 Hz IEC/EN 60 068-2-6

20 / 050 / 04 IEC/EN 60 068-1

Climate resistance:

Terminal designation: EN 50 005

Wire connection:

DIN 46 228-1/-2/-3/-4

Fixed screw terminals

Cross section:

0.5 ... 10 mm² (AWG 20 - 8) solid or

0.5 ... 6 mm² (AWG 20 - 10)

stranded wire with and without ferrules

Stripping length:

10 mm

Fixing torque:

0.8 Nm EN 60 999-1

Wire fixing:

Cross-head screw / M3.5 box terminals

Mounting:

DIN rail IEC/EN 60 715

Weight:

approx. 80 g

Dimensions

Width x Height x Depth: 17.5 x 90 x 66 mm

Standard Type

RK 8810.41/001 AC 230 V 50 / 60 Hz 0.5 ... 10 min

Article number: 0058992

• Output: 1 NO contact, delay

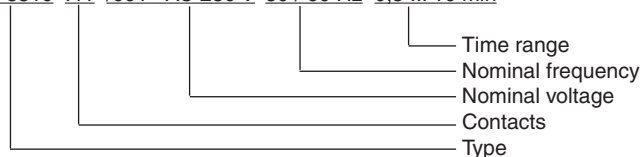
• Nominal voltage U_N : AC 230 V

• Timer range: 0.5 ... 10 min

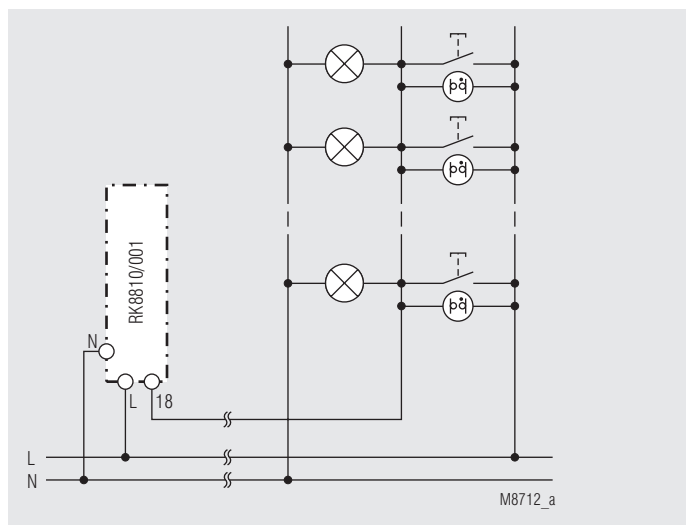
• Width: 17.5 mm

Ordering Example

RK 8810 .41 /001 AC 230 V 50 / 60 Hz 0.5 ... 10 min



Application Example



3-wire circuit N on push button